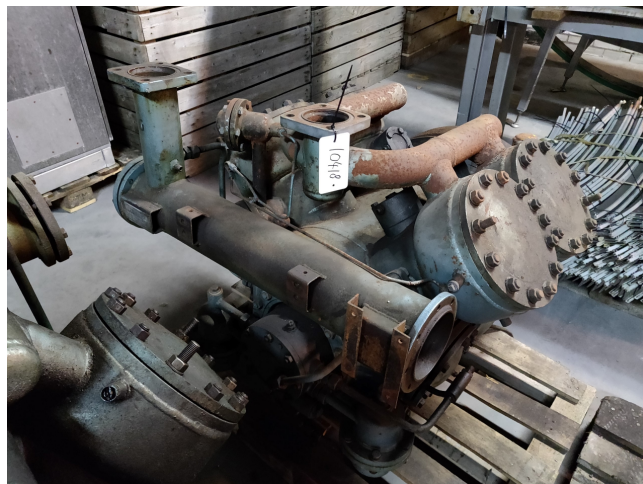


# Grasso RC 3111

## Specifications

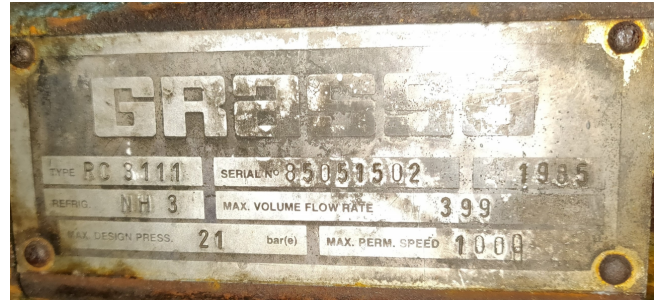
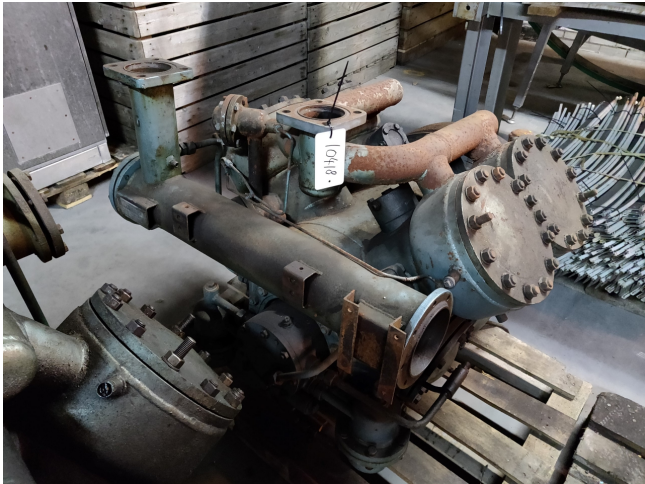
|                   |                                   |
|-------------------|-----------------------------------|
| Brand             | Grasso                            |
| Type              | RC 3111                           |
| Refrigerant       | NH 3 (ammonia)                    |
| kW at -20°C/+40°C | 130,7                             |
| kW at -30°C/+40°C | 103,2                             |
| kW at -40°C/+40°C | 61,6                              |
| Remarks           | Capacity 130,7 based on -25C/+40C |
| Stock             | 1                                 |



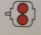

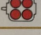

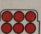
## Description

### Used Grasso RC 3111

Used Gea - Grasso RC 3111 two-stage compressor. For all the other specs (if available), see the picture of the manufacturer model plate or the attached pdf file. \*Why choose for HOSBV? Were not only the largest used refrigeration specialist in Europe, but also, we deliver all equipment including an extensive test, warranty and industrial cleaning. \*Optional we can also perform a new paint job and arrange the logistics



**Performance table**

| cylinder arrangement  | single-stage |                                  |                 |            |            |            | two-stage |                                  |                 |
|---|--------------|----------------------------------|-----------------|------------|------------|------------|-----------|----------------------------------|-----------------|
|   | type         |                                  | NH <sub>3</sub> | R12        | R22        | R502       | type      |                                  | NH <sub>3</sub> |
|   | RC 211       | Q <sub>0</sub><br>P <sub>e</sub> | 163<br>34       | 93<br>25   | 157<br>37  | 160<br>47  |           |                                  |                 |
|  | RC 311       | Q <sub>0</sub><br>P <sub>e</sub> | 245<br>50       | 140<br>36  | 236<br>55  | 241<br>70  | RC 2111   | Q <sub>0</sub><br>P <sub>e</sub> | 45<br>23        |
|  | RC 411       | Q <sub>0</sub><br>P <sub>e</sub> | 326<br>65       | 186<br>48  | 314<br>73  | 321<br>93  | RC 3111   | Q <sub>0</sub><br>P <sub>e</sub> | 63<br>31        |
|  | RC 611       | Q <sub>0</sub><br>P <sub>e</sub> | 490<br>97       | 279<br>70  | 471<br>108 | 481<br>138 | RC 4211   | Q <sub>0</sub><br>P <sub>e</sub> | 91<br>44        |
|  | RC 811       | Q <sub>0</sub><br>P <sub>e</sub> | 734<br>144      | 418<br>104 | 707<br>163 | 722        | RC 5111   | Q <sub>0</sub><br>P <sub>e</sub> | 92<br>47        |
|   |              |                                  |                 |            |            |            | RC 6311   | Q <sub>0</sub><br>P <sub>e</sub> | 136             |

1 2 3 4 5

**Technical data of Grasso two-stage compressors**

**Delivery programme**

| Series | Type    | Cylinders    |                |        |    |                | Rotational speed<br>(min <sup>-1</sup> ) | LP swept volume at max. speed<br>(m <sup>3</sup> /h) | Standard part load steps expressed in percentage of full load LP swept volume<br>(%) |                    |
|--------|---------|--------------|----------------|--------|----|----------------|--|--|--|--------------------|
|        |         | Bore<br>(mm) | Stroke<br>(mm) | Number |    | Volume ratio φ |  |  |  |                    |
|        |         |              |                | LP     | HP |                |  |  |  |                    |
| RC9    | RC219   | 110          | 85             | 2      | 1  | 2              | 600                                      | 1450   | 141<br>281   | 100<br>100-75-50   |
|        | RC429   |              |                | 4      | 2  | 2              |  |  |  |                    |
| RC11   | RC2111  | 160          | 110            | 2      | 1  | 2              | 400                                      | 1000   | 265  | 100                |
|        | RC3111  |              |                | 3      | 1  | 3              |  |  | 386  | 100-67             |
|        | RC4211  |              |                | 4      | 2  | 3              |  |  | 531  | 100-75-50          |
|        | RC5111  |              |                | 5      | 1  | 5              |  |  | 664  | 100-80-60-40       |
|        | RC6311  |              |                | 6      | 3  | 2              |  |  | 796  | 100-67-33          |
|        | RC7211  |              |                | 7      | 2  | 3.5            |  |  | 929  | 100-86-72-57-43-29 |
|        | RC8411  |              |                | 8      | 4  | 2              |  |  | 1062   | 100-75-50-25       |
|        | RC9311  |              |                | 9      | 3  | 3              |  |  | 1194   | 100-78-67-56-45-33 |
|        | RC10211 |              |                | 10     | 2  | 5              |  |  | 1327   | 100-80-70-60-50-30 |

RC 9

